

The Simatec logo is located in the top right corner. It features the word "SIM" in black, followed by a red stylized triangle, and then "ATEC" in black. The background of the entire image is a photograph of a large blue steel suspension bridge under construction, spanning a deep valley with green trees and distant mountains under a blue sky with white clouds. The image has a red gradient overlay on the left and bottom edges.

sim^Δtec

MINING

ENGINEERED TO MOVE MOUNTAINS

www.simatec.org



SIMATEC

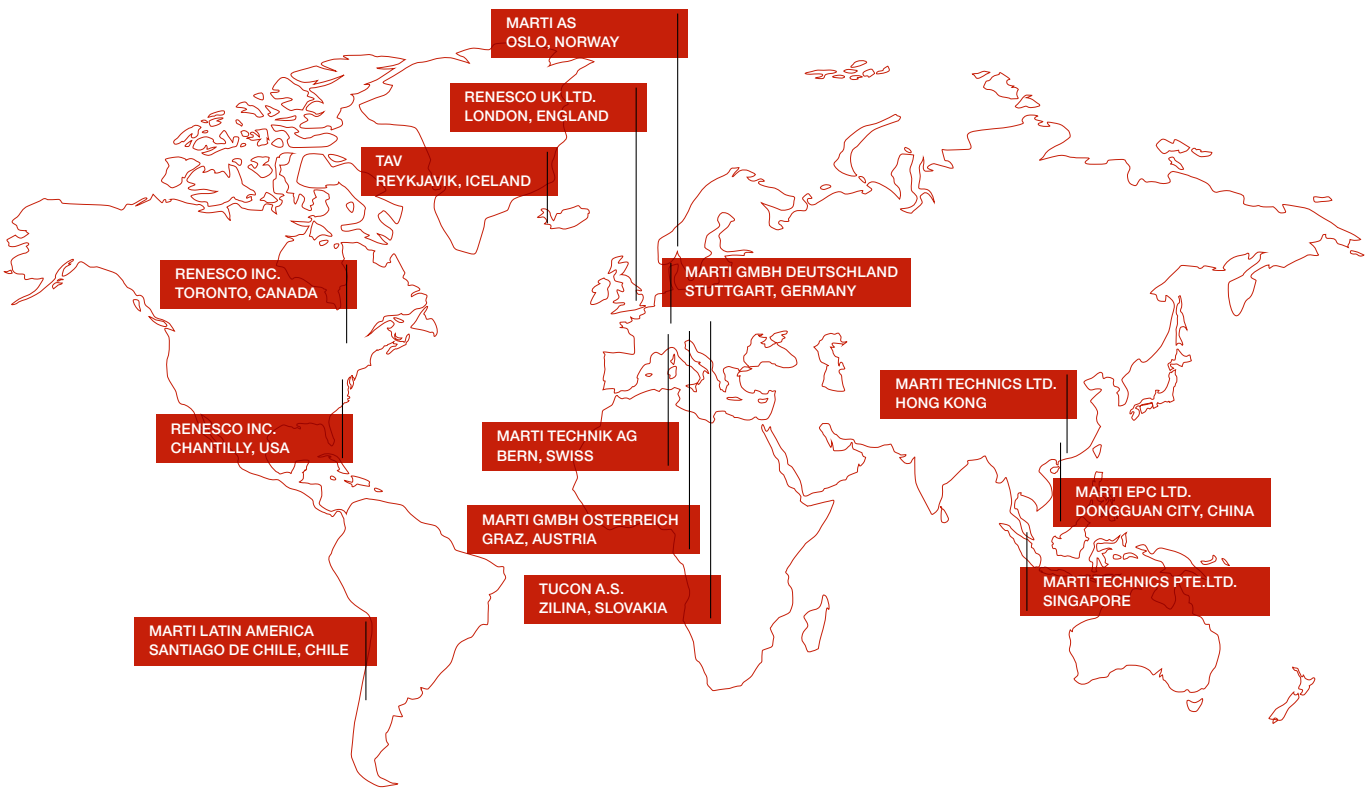
POWERED BY MARTI GROUP
AND MARTI TECHNIK AG

Simatec specializes in screening technology, filtration and conveying processes – with a focus on individual customer solutions rather than series production.

As part of the Marti Group, we draw on the expertise and innovative strength of one of Switzerland's leading construction and technology groups. Together with Marti Technik AG as our technical partner, we combine engineering skills, quality and innovative spirit – for tailor-made systems that are in use all over the world.

Our customers appreciate the close, practice-oriented cooperation right from the start. From the first meeting to commissioning, we deliver well considered solutions and accompany every project with the right degree of flexibility, expertise and commitment.

Whether sophisticated conveyor systems, robust screening technology or efficient dewatering systems – at Simatec, experience meets technical diversity. Supplemented by our own maintenance and service team, we offer a complete package that impresses.



ABOUT MARTI GROUP

As the parent company, the Marti Group unites over 80 independently operating companies under one roof – including Simatec. This federally organized structure makes it possible to bundle specialist knowledge in a targeted manner, make optimum use of synergies and at the same time maintain entrepreneurial flexibility.

With locations throughout Switzerland and in numerous international markets – including Germany, Austria, Canada, Norway and China – the Marti Group has a global presence. This proximity to projects and clients allows us to act quickly, efficiently and in a solution-oriented manner – regardless of whether we are dealing with smaller measures or complex large-scale projects.

EMPLOYEES IN OVER 80 COMPANIES

7,000

KNOW-HOW

- Civil engineering
- Underground structures
- Civil and structural engineering
- Foundation engineering
- Building construction
- Environmental technology
- Full-service provider
- Plant engineering

ABOUT MARTI TECHNIK AG

As a long-standing technology partner of Simatec, Marti Technik brings comprehensive expertise and innovative strength to every project. The internationally active company stands for the highest quality, technological precision and creative solutions – always with an eye to the future.

The close cooperation with Marti Technik enables us to implement even complex requirements efficiently and technically sound. Our customers benefit from a strong network – and solutions from a single source.

Together, we implement tailor-made systems and installations in the following areas:

- Conveyor technology
- Electrical engineering
- Infrastructure systems
- Formwork and special machine construction
- Plant construction stone & earth
- Building technology



MINING

SINATEC

 **BACKFILLING**
PAGE 10


 **DRILL & BLAST**
PAGE 6

 **MATERIAL PROCESSING**
PAGE 12


 **STORAGE SOLUTION**
PAGE 8

 **LONG DISTANCE CONVEYOR**
PAGE 14

 **UNDERGROUND MINING**
PAGE 16

 **VERTICAL CONVEYING**
PAGE 18

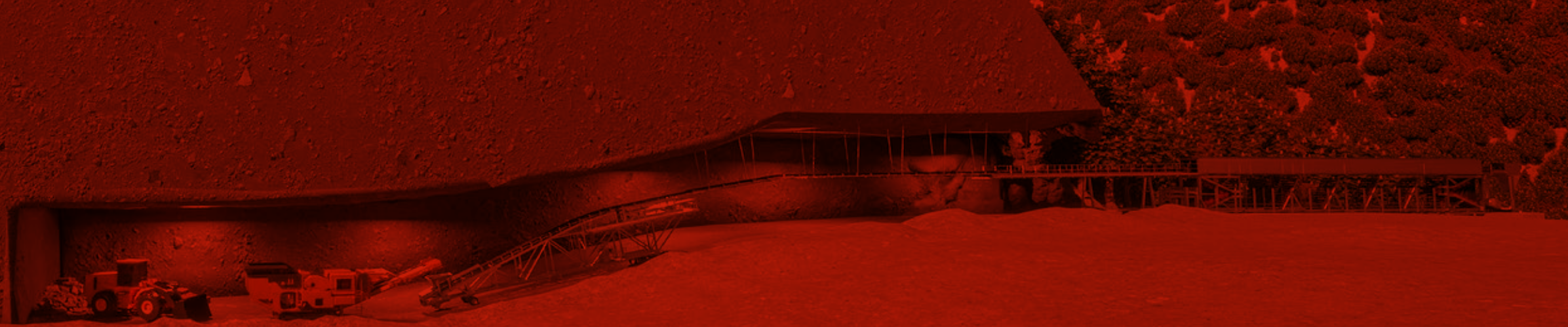
 **SHIP LOADING**
PAGE 20

 **TRAIN LOADING**
PAGE 21



DRILL & BLAST

SHAFT EXCAVATION USING BLASTING WITH AUTOMATED MUCK REMOVAL



Our solution for underground mine shaft excavation using the blasting method (BVR) ensures efficient operations, including compliance with explosion protection requirements

- Automated muck removal
- Suitable for various shaft cross-sections, allows curved excavation
- Minimized downtime, adaptable to customer requirements
- Easy installation
- The conveyor system can be used for subsequent material transport

BELT STORAGE SYSTEM

Belt Storage System – a reliable solution for ensuring continuous advance, allowing the extension of the conveyor to the next scheduled stop.

- Belt storage capacity up to 600 meters, advance up to 300 meters.
- Automatic adjustment of belt extension and tension ensures stable operation and minimizes manual intervention.
- Reduces downtime, adapts to customer requirements



FLYER

The Flyer is a modern, mobile, and highly efficient solution for loading material onto the conveyor. Equipped with its own tracked platform, it provides autonomous movement and ease of operation. Control is carried out using an integrated remote, ensuring precision and safety.

- Autonomy – the tracked drive allows easy movement on difficult terrain.
- Efficient loading – optimized for feeding material to the conveyor line.
- Flexible application – serves as a platform for extending the conveyor belt.
- Ease of control – intuitive remote for simple and safe operation.
- Belt Extension system is located on the Flyer.
- The Flyer is a reliable and convenient piece of equipment for optimizing tunneling processes and increasing work efficiency.



CONVEYOR SYSTEM

- Fast and continuous material transport.
- Automated systems minimize manual labor.
- Can be customized to various routing and elevation changes.
- Modular design allows for expansion and customization to project requirements.

STORAGE SOLUTION

OPTIMAL SOLUTIONS FOR STORAGE AND TRANSPORTATION

We offer innovative and efficient solutions for material storage, taking into account their further transportation. Depending on your needs, we select the optimal form: longitudinal, circular, conical or stationary. Filling into bunkers with subsequent truck transportation is also possible, ensuring convenient and efficient logistics.

Our storage solutions are tailored to different industries and storage volumes, guaranteeing reliability, safety, and process optimization.

STACKERS

The reliable solution for bulk material handling and storage.

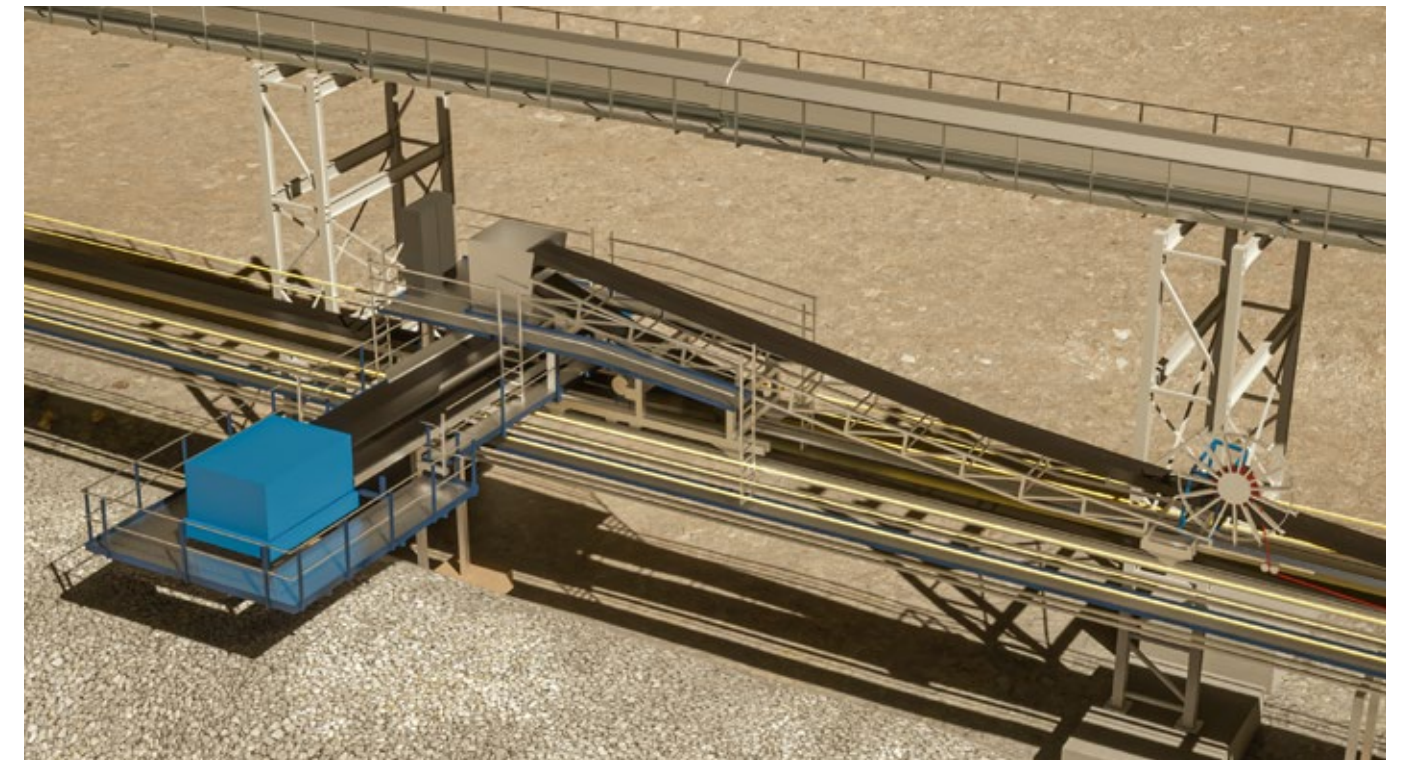
- High capacity up to 7,000 t/h – efficient storage of large volumes of materials.
- Automatic filling of the stockpile is possible – minimizing dust generation and maximizing stockpile volume.
- Monitoring of Equipment – with controlled scheduled repairs and maintenance.
- Robust design – resistant to stress and long life with controlled maintenance.
- Flexible application – adaptable to different types of materials.



TRIPPER CAR

The SIMATEC tripper car conveyor is the ideal solution for efficient material storage in elongated stockpiles or in the outdoor area.

- High capacity of up to 7,000 tons per hour, making the conveyor ideal for large production facilities
- Flexible material distribution – left- or right-hand discharge option, and retrofit with reversible conveyor for extended functionality
- Operation in extreme conditions – reliable operation in temperatures from -40°C to +40°C
- State-of-the-art control technology – integration with industrial WLAN for remote control and process automation
- Environmental friendliness and dust minimization – option to retrofit with an automatic telescopic discharge box, which reduces dust during material discharge



REVERSIBLE BELT CONVEYOR

The reversible conveyor – the efficient solution for optimizing storage capacity.

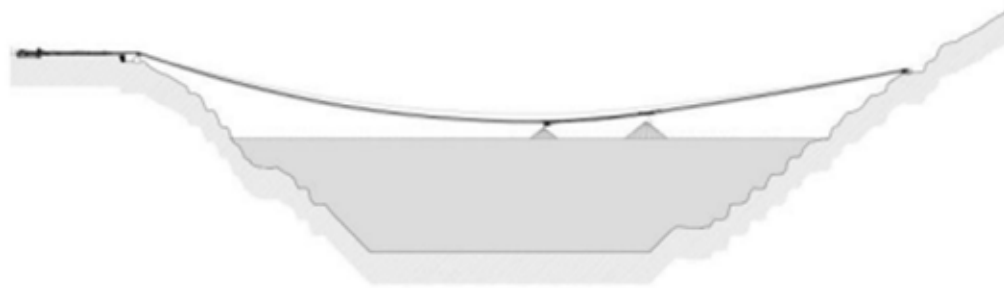
- Customized solutions – we design and manufacture conveyors that perfectly fit your requirements
- High quality – we use only proven components and materials
- Support and service – full support from concept to commissioning and after-sales





BACKFILLING

Efficient backfilling is a critical aspect of sustainable mining operations, ensuring the pit reclamation and reducing environmental impact. Our tailored conveyor solutions are designed to optimize the backfilling process with safety, efficiency, and cost-effectiveness at the forefront.



DISCHARGE TABLE

- Efficient material distribution – Fast and even unloading of bulk material.
- Flexibility & adaptability – Can be designed for different materials and operating requirements.



SKY CONVEYOR SYSTEM

Maximize the productivity of your open-pit mine with our hanging sky conveyor belt systems on wire ropes!

- High energy efficiency – Lower energy consumption and CO₂ emissions through optimized conveyor routes.
- Flexible & modular – Ideal for rough terrain and quick adjustments
- Low maintenance & long service life – Robust construction with low operating costs.



MATERIAL PROCESSING

Simatec plans and designs technically innovative stationary and container-mobile plants in the stone, earth and recycling industries that are tailored to specific customer requirements.

Our mobile water treatment plants set standards in environmental protection and protect budgets and water cycles. Our own production of screening machines and chamber filter presses rounds off the Simatec product range.

WATER TREATMENT

Water, a resource that is becoming increasingly rare and precious!

- Our stationary and mobile water treatment plants ensure environmental compliance and operational efficiency.
- Each site is assessed individually in cooperation with geologists and environmental engineers to define the optimal treatment process. Full engineering, including plant and control systems, is provided.
- We offer support during regulatory meetings and approval procedures to address concerns and streamline decision-making.



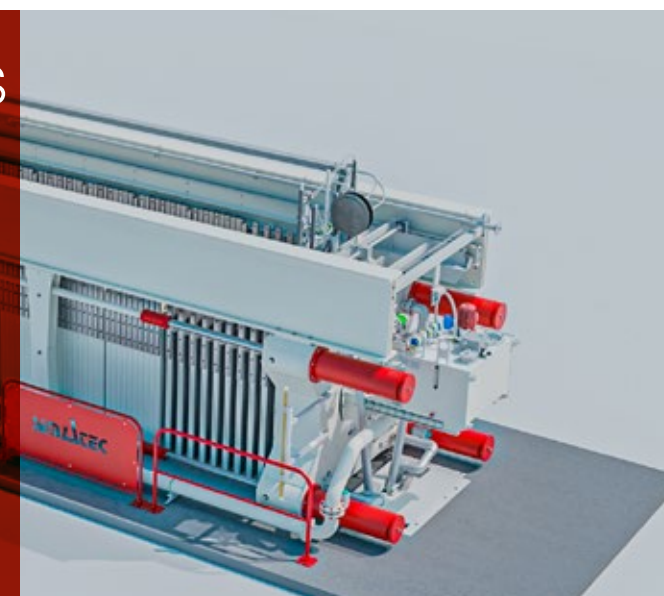
MACHINE CONSTRUCTION

Thanks to Simatec's many years of experience in mechanical and plant engineering, you benefit from comprehensive know-how resulting from the mutual transfer of knowledge between the two areas.

CHAMBER FILTER PRESSES

You're in the mud? We'll pull you out!

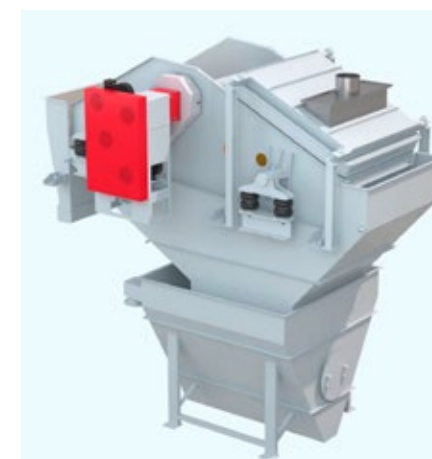
- Tailored solutions for dewatering in mining, chemical, and food industries.
- Reliable performance – even under demanding conditions.



LINEAR-SCREENING-MACHINE

Single or two-deck machines for efficient post-washing and dewatering of gravel, sand, or mixed material.

- Rising deck with rear wall (and optional side) drainage
- Integrated spray system for effective secondary washing
- Upper deck usable for coarse separation or as protective deck



CIRCULAR OSCILLATOR

The classic for dry and wet sieving.

- Ideal as pre-separators or for classifying medium to coarse material (up to ~150 mm).
- Circular motion and inclined screen (10°–20°) ensure efficient material flow and low risk of plugging.
- Primarily used for dry, occasionally wet screening.



ELLIPSE-SCREENING-MACHINE

High-precision wet and dry screening in fine to medium grain ranges. ~20–30% more capacity vs. conventional systems with same screening area.

- Independently adjustable parameters
- Synchronized exciter shafts
- Sharper separation cuts
- Easy maintenance & low installation height





LONG DISTANCE CONVEYOR

The Overland conveyor is a modern and reliable solution for the transportation of large volumes of rock, ore, coal and other bulk materials. It keeps mining and processing plants running smoothly, reducing logistics and maintenance costs.

MOBILE LOADING UNIT

- Flexibility – Easy repositioning and quick readiness for use at different locations. Ideal for changing working conditions and projects.
- Reliability – Robust construction ensures a long service life and is ideal for demanding working environments.
- Fast commissioning – The mobile feed hopper can be moved to the desired location and used within a short time.



LONG DISTANCE CONVEYOR

- High capacity of 10,000 t/h – which is ideal for large mining operations
- Horizontal radii of up to 150 meters – This allows the design of routes with tight curves, reducing the number of transfer stations and increasing overall system efficiency.
- Minimal operating costs – Reduced fuel, personnel and maintenance costs compared to trucking.
- Environmental friendliness – reduced energy costs due to the use of recovery solutions.



UNDERGROUND MINING

Our explosion-proof main and length-variable conveyor systems are designed for the special challenges of underground mining. These systems focus on safety, efficiency and reliability, and are ideal for material handling in the most demanding environments.

MOBILE RETURN STATION

- Flexibility – It can be easily relocated without extensive modifications, depending on the progress of the extraction.
- Cost efficiency – Reduces expensive downtime and enables rapid adaptation to changing mining areas.
- Compact design – Saves space in narrow shafts or tunnels and facilitates transport.
- Robust construction – Designed for harsh mining operations



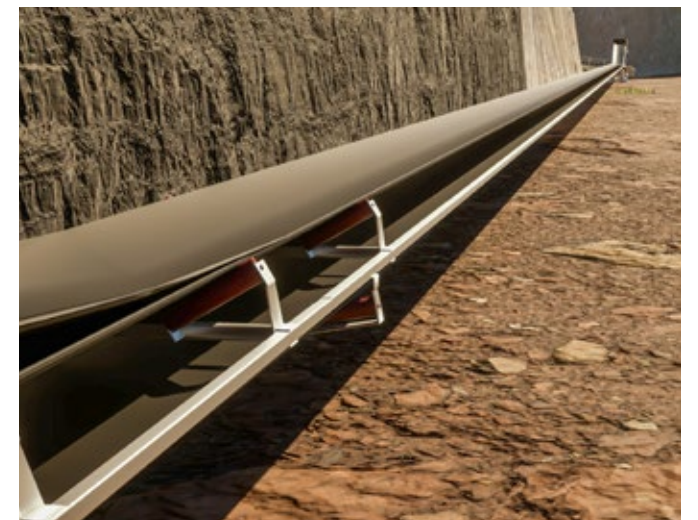
BELT EXTENSION SYSTEM

- Enables quick and safe extension of the conveyor belt, without long downtimes.
- Adapts flexibly to the mining progress and ensures a continuous material flow.
- Minimizes production interruptions by automated or semi-automated extension or shortening of the belt.



EX PROOF CONVEYOR SYSTEM

- Explosion-proof design ATEX I M2 – meets strict safety requirements
- Route flexibility – the system allows transportation of materials and conveyed out of complex coal faces on challenging routes, including curves and horizontal radii of up to 150 m
- Retractable conveyors – ensure flexibility and adaptation to changing mining conditions
- High productivity – increases mining efficiency, reduces costs, and optimizes logistics





VERTICAL MATERIAL CONVEYING

Our vertical conveyor provides efficient vertical material handling – the ideal solution for the mining and energy industries. Get maximum productivity and safe, uninterrupted material transport, get away from cycling and optimize your processes.

SANDWICH-CONVEYOR

- Space-saving design: Handles steep angles up to 90°, requiring minimal floor space
- Secure material transport: Materials are enclosed between two belts, preventing spillage or slipping.
- Versatility: Suitable for various bulk materials, including fine, sticky, or wet substances.
- High capacity: Volumes up to 2.000 t/h



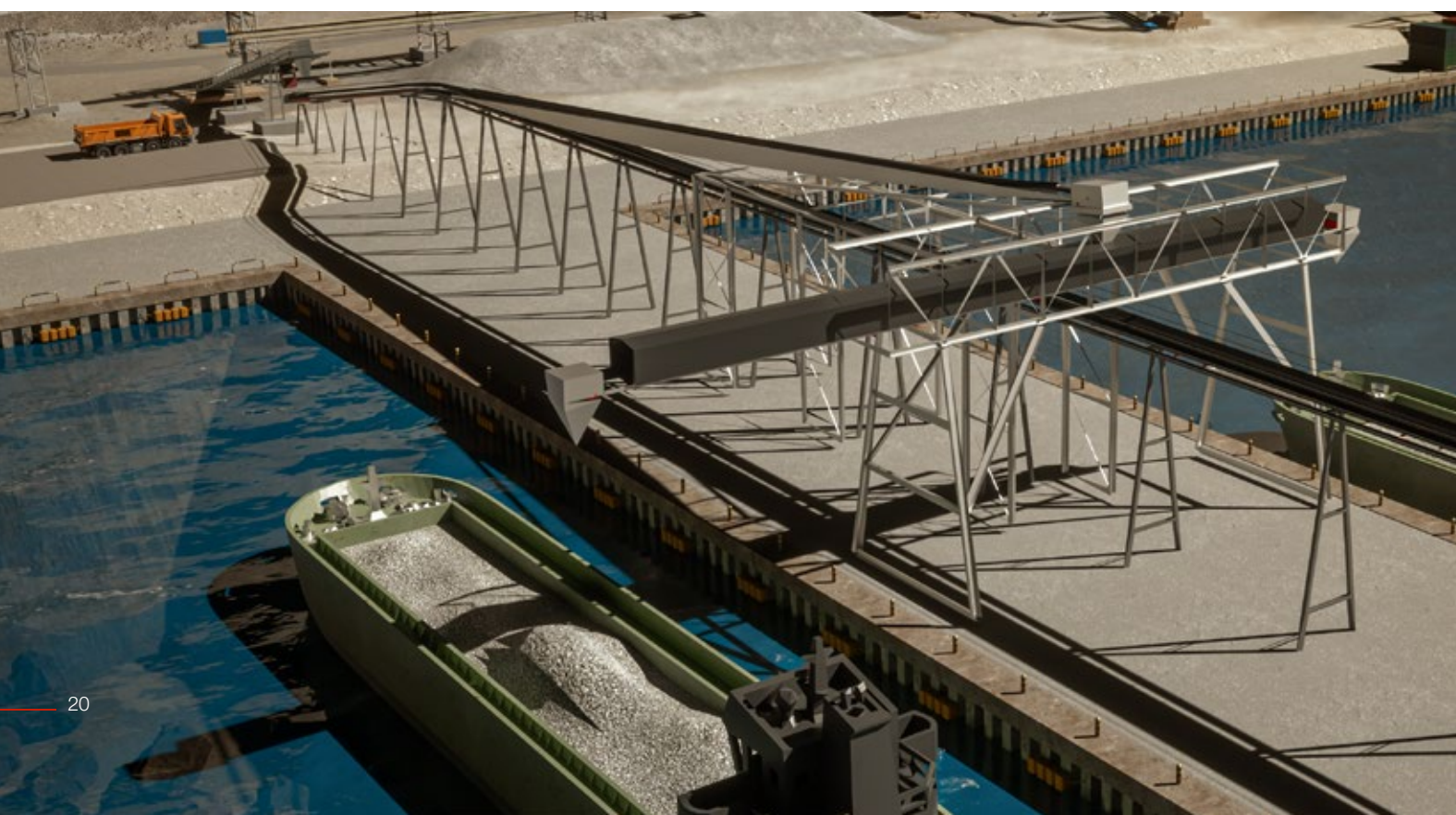
VERTIKAL
CONVEYOR



SHIP LOADING

Efficient ship loading is essential for the bulk material handling industry, ensuring rapid and safe transfer of goods from land to sea. Conveyor systems are integral to this process, offering flexibility, speed, and cost-effectiveness.

- High handling capacity – Large quantities of material can be loaded continuously and quickly.
- Cost efficiency – Reduces the use of expensive trucks, excavators or cranes and lowers operating costs.
- Energy saving – Belt feeders require less energy than alternative loading techniques.
- Environmentally friendly – Lower CO₂ emissions, less dust and reduced noise.
- Automated processes – precise control and consistent material loading minimize losses.



TRAIN LOADING

Our state-of-the-art wagon loading system combines maximum efficiency with reliable performance. Using a well-designed network of high-capacity conveyors and storage bunkers, bulk materials are transported smoothly and continuously to their destination.

Thanks to intelligent control and precise dosing, wagon loading is fully automated, time-saving, and highly accurate – regardless of material type or throughput volume. The modular design allows seamless integration into existing infrastructure and easy adaptation to project-specific or customer-specific requirements. The result: Minimal manual effort, maximum loading capacity – with uncompromising operational safety.

- Fully automated transfer from bunker to rail wagon
- High-performance belt conveyors with dust-tight transfer points
- Optimized material flow through smart dosing control
- Rugged, low-maintenance design for continuous operation
- Modern control systems for visualization and operation
- The future of wagon loading – engineered for performance.



CONTACT SIMATEC MINING



Dmitrij Vogt
Mobile +49 1525 8375351
dmitrij.vogt@simatec.org

Georg Butsch
Mobile +49 1525 8375352
georg.butsch@simatec.org



SIMATEC Maschinenbau AG is your reliable partner for high-quality conveying technology in mining and tunneling. With many years of experience in plant engineering and a strong focus on on-site applications, we deliver robust and tailored solutions for demanding environments – above and below ground.

Our strength lies in the seamless integration of engineering, manufacturing, assembly, and operational know-how. This enables us to design and continuously optimize systems that are precisely matched to your specific requirements – right from the initial concept through to successful commissioning. We are committed to delivering not only technical excellence but also first-class service: with personal consultation,

transparent communication, and reliable after-sales support that accompanies you throughout the entire lifecycle of your system.

Upon request, we are happy to provide you with detailed references from past projects or arrange a site visit to one of our current installations – giving you a firsthand impression of our equipment's performance and quality.

We look forward to taking on your challenge and guarantee a project execution that meets the highest standards in quality, scheduling, and cost-efficiency.

SIMATEC Maschinenbau AG
Conveying Technology. Reliable. Durable. On Site
www.simatec.org



Simatec Maschinenbau AG
Technikumstrasse 1 . 6048 Horw
info@simatec.org . www.simatec.org



sim Δ tec